

**"Soft ground formation" for Clay, Muddy, Sandy, or Tuffaceous substrate**  
**Patent Pending**

# **SPIKE BIT**

## **GW**



### **Features**

1. "Great cutting" effect  
The exposure of surface diamond is designed by twice as much as the standard surface set bit so the drilling speed is twice as fast.

Bottom picture: **2**

2. It is effective in drilling soft ground formation that cannot use metal or impregnated bits

3. Special inside gauge  
Short gauge makes the core easier to enter.

Top picture: **1**

4. Wide water way  
The Wide water way allows drilling fluid to pass for circulating easier, thus the drilling fluid pressure can be kept in moderation.

5. Unique face design  
The face design makes the drilling fluid to pass for circulating easier in addition to the wide water way function, and it works to curb the amount of cuttings stuck on the cutting face, thus the original drilling performance can be maintained.



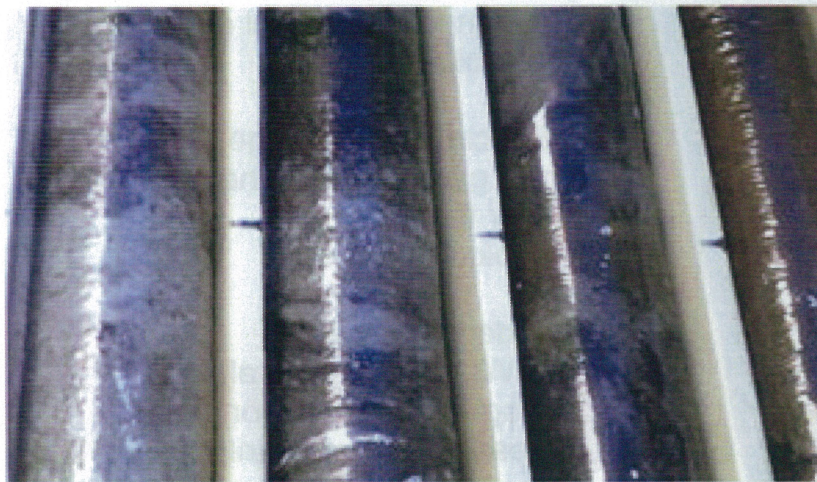
<When the core tends to stick to the core lifter, or be stuck in it, the non-lifter case is effective.>



**"Clay"**



**"Tuffaceous rock" core sample**



**"Mudstone, Clay, Tuffaceous" core samples**



**\* Optional parts**

- ◇ Drilling fluid volume : 5 to 10 liter /minute is recommended as a guide.
- ◇ Bit rotating speed : 90 to 200 RPM is recommended as a guide.
- ◇ Please avoid using it on pebbles, boulders, and hard rock layers.
- ◇ Please do not use without drilling fluid.